

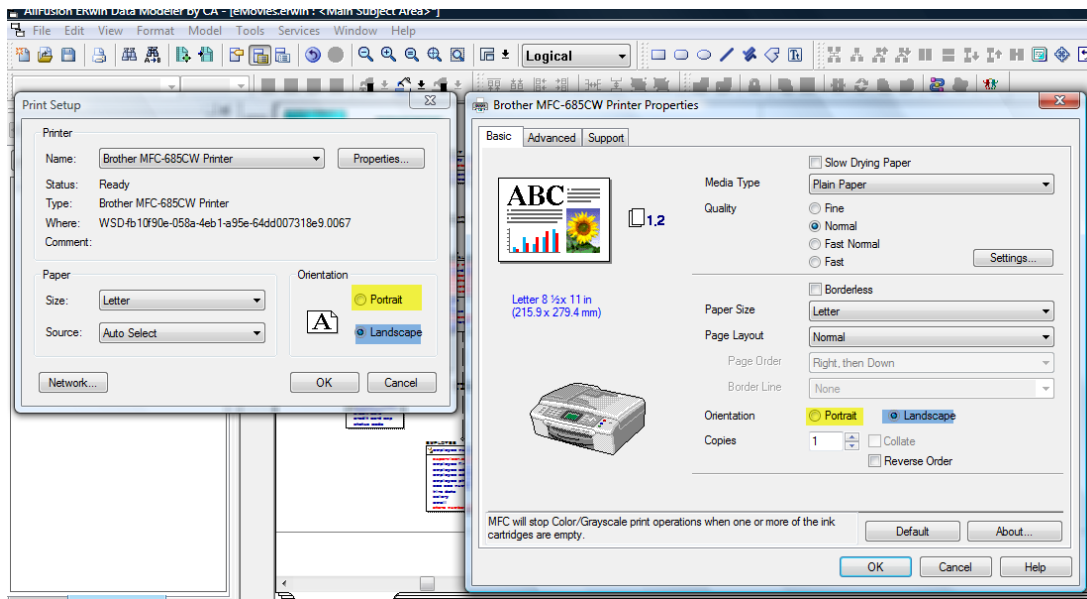


Printing in CA ERwin Data Modeler 7.3.x

By Ed Bantegui

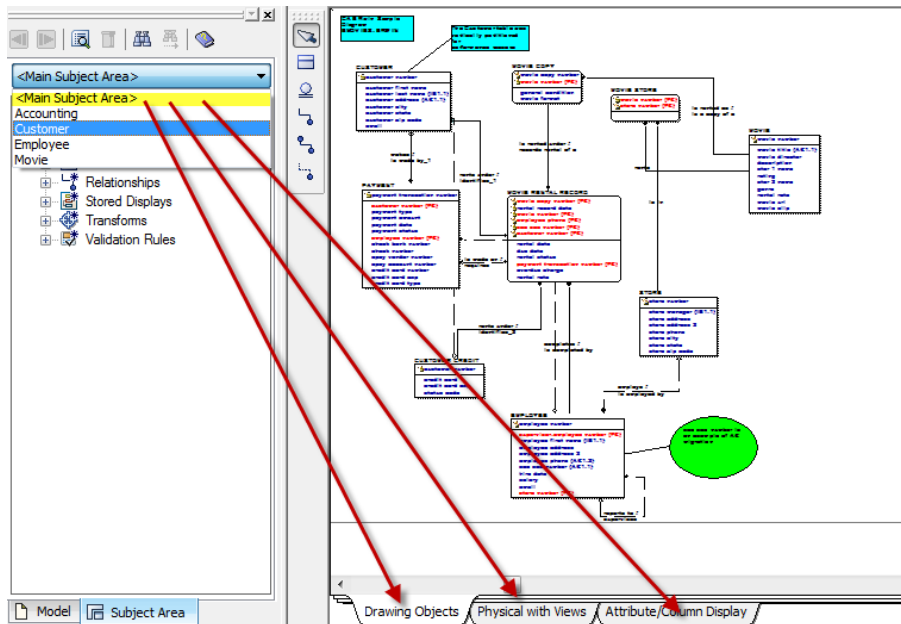
This may be the most overlooked function in CA ERwin Data Modeler-- PRINTING!! The value in this document is understanding how CA ERwin Data Modeler Stored Displays can be pre-set in order to generate better report not only in the actual printing but also this is the source of how ERwin will generate images in other outputs such as PDF, WORD doc using the Report Template Builder.

1. Choose and define your Printer and make sure you can print both Portrait and Landscape.



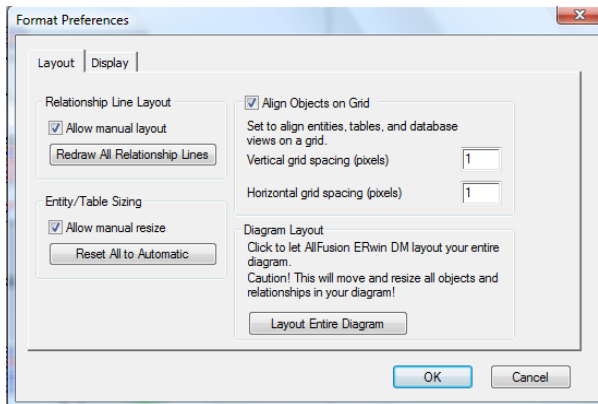
Printing can be INDIVIDUALLY setup for each Subject Area's Display.

2. Subject Area's Default Stored Display (Display1) and or
3. User Defined Stored Display for each Subject Area. Sample Below show the Main Subject Area has 3 Stored Displays 1) Drawing Objects 2) Physical With Views and 3) Attribute/Column Display



It is important to show the Page Grid.

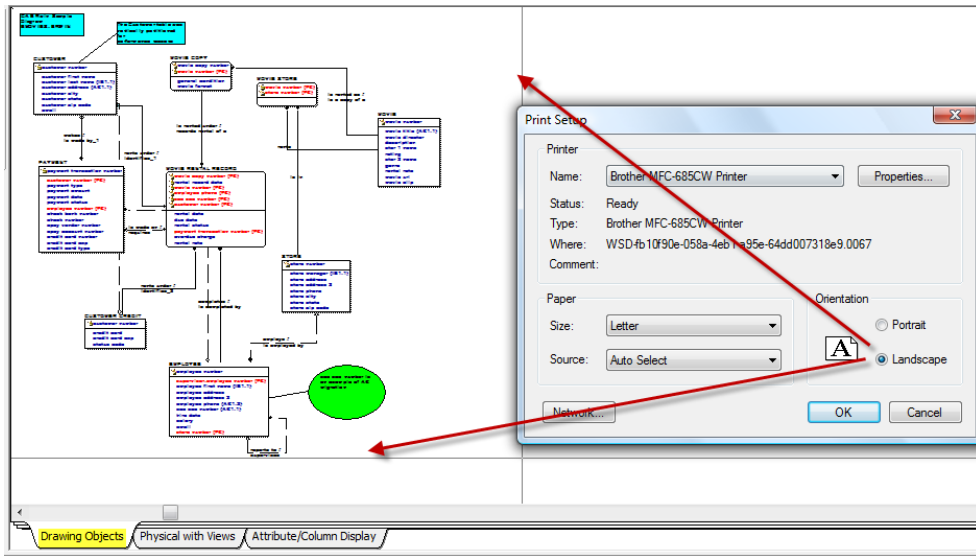
- Page Grid is defaulted to



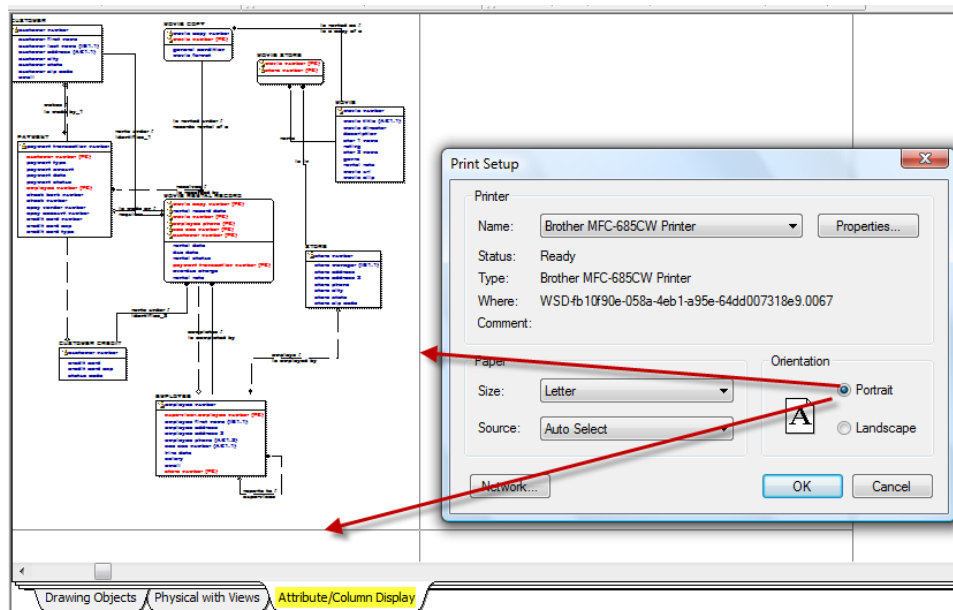
- Go to Format and select the option to show Page Grid Lines

The sample layout used the eMovies model provided with the ERwin 7.2.x installation.

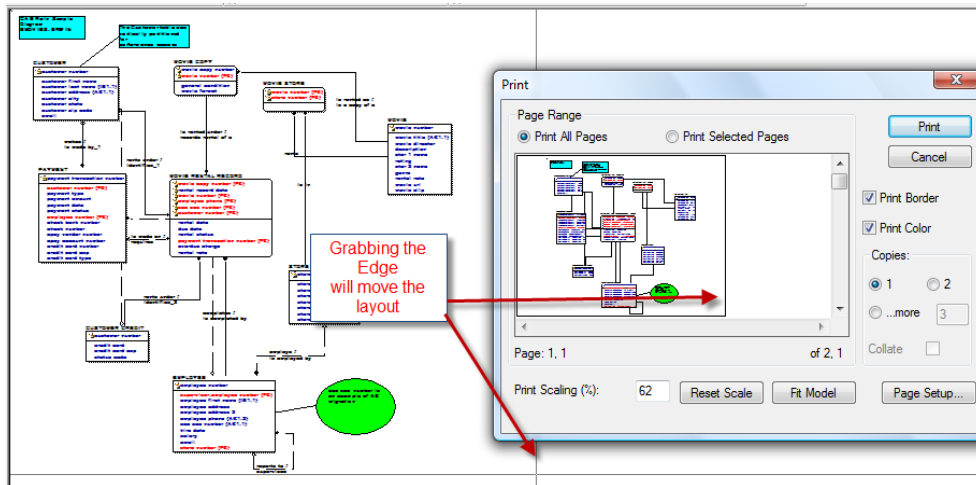
Notice each SA Display can be configured to be set individually. In order to see all objects in the currently selected Subject Area's Display1 or in the sample below uses the Drawing Objects (Stored) Display. This particular display is setup for a Landscape



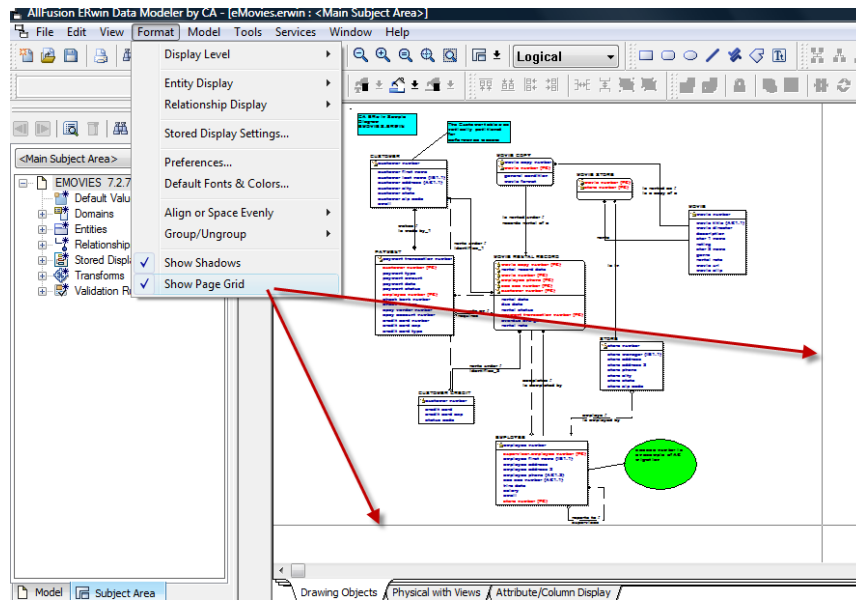
Whereas the Attribute/Column (Stored) Display is set for Landscape.



GRID page Line can be changed using the ERwin Print Function



Golden Rule in Printing: Set all the images to fit first and use the Grid Line and click and drag the line to make sure it fits.



If you have other Objects in the model and they do not fit in one quadrant. Move the objects so they would fit in another print quadrant

