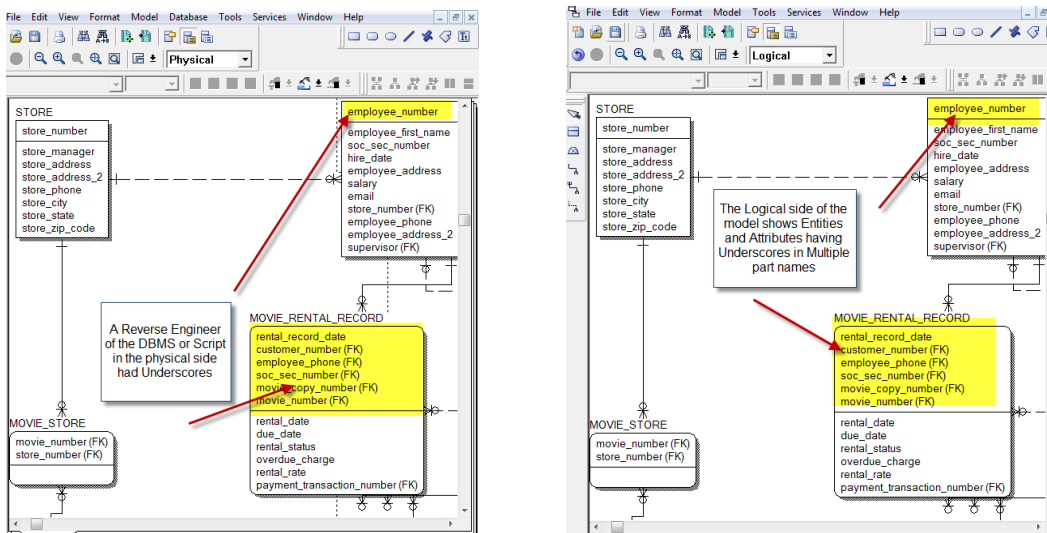




Replacing Underscores in a Logical Model when Reverse Engineering a DBMS /Script By Ed Bantegui

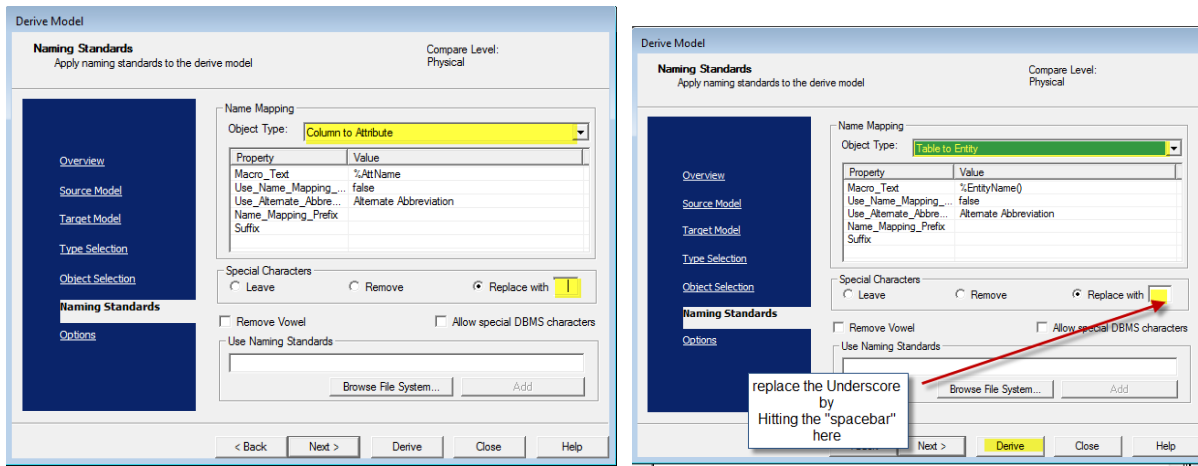
In version CA ERwin Data Modeler 7.x, modelers/users that R/E (Reverse Engineer) to a Logical /Physical model from the DBMS or SCRIPT resulted with Logical Entities and Attributes with multiple part names with UNDERSCORES in the logical side of the model.



Organizations have asked if there was a way to create a logical /physical models where the logical side name should have spaces i.e. “MOVIE RENTAL RECORD” removing the underscores (as seen in the diagram above) and replacing them with spaces.

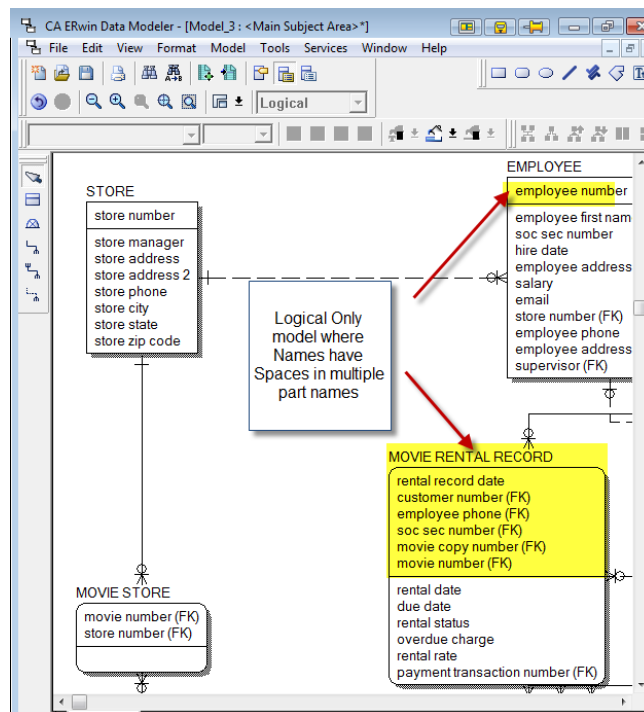
To do this requires a 3 step process:

STEP 1: R/E the DBMS or Script to a PHYSICAL ONLY model and then save the physical model. Once the model is saved, derive a logical model and use the naming standards option to “replace” underscore with “_”. The replacement of the “_” to “space “ which requires the modeler/user to actually hit the spacebar in the dialog box as shown.



Care should be taken in order to preserve other dual objects that have logical / physical inheritance linked to them such as Relationship that translate to the physical side as “Foreign Key Constraints”.

STEP 2: Derive a logical only model from the Reverse engineered Physical ONLY model. Save the LOGICAL ONLY model to the file system. The image below shows the derived logical only mode. Note: the Underscores are removed from the model.



STEP 3: Derive a Logical / Physical model from the newly save Logical only model. The result is the logical / Physical model with logical names without underscores!

Derive Model

Select the Target Model
Please select the options to create a new derived model

Compare Level: Unknown

New Model Type
 Logical
 Physical
 Logical/Physical

Create Using Template:
 Blank Logical/Physical Model

Remove Browse File System... Browse ERwin MM...

Creates a new model with both logical and physical levels (CA ERwin DM class) and default settings.

Target Database
 Database: SQL Server Version: 2005/2008

< Back Next > Derive Close Help

