



Role Playing Dimensions: Creating Role Names

By Dileepkumar Pharsiyawar

Description

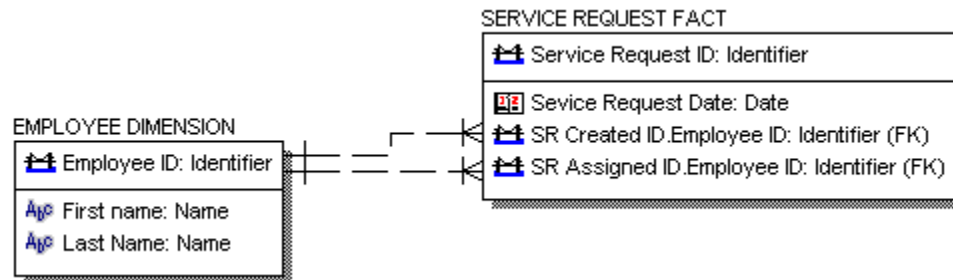
A single dimension which is expressed differently in a fact table using either views or role names is called a role-playing dimension. Date dimension is typically implemented using the role playing concept.

Example

Consider the case where two dimensions are required for Service Request Created By and Service Request Assigned To. Here instead of creating two separate physical dimension tables, use the concept of role playing/role name. Same attribute Employee ID from Employee dimension will be migrated twice to the Service Request Fact table.

How to Create in CA ERwin Data Modeler?

In the following diagram you see a SERVICE REQUEST fact table with two relationships to EMPLOYEE dimension table.



The key of EMPLOYEE is Employee ID. From the relationships it is evident that one Employee ID is for Service Request Created By and other one is for Service Request Assigned To.

Steps in creating above two relationships in CA ERwin Data Modeler:

Step 1: Click on Non-Identifying relationship icon in the ERwin Toolbox. Click on Employee ID and drag and drop into service request fact table.

Step 2: Rename the Employee ID in fact table to SR Created ID in Logical Model and to SR_CRETD_ID in Physical Model.

Step 3: Click again on Non-Identifying relationship icon in the ERwin Toolbox. Drag and Drop Employee ID into fact table.

Step 4: Now rename the Employee ID in fact table to SR Assigned ID in Logical Model and to SR_ASGND_ID in Physical Model.

Note

Create two separate Views/Aliases on Employee Dimension in Business Objects Universe if you need to refer both the columns in a single query.